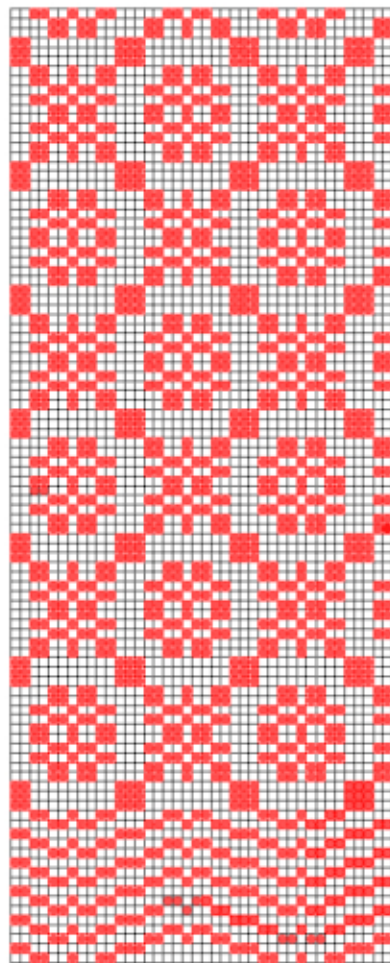
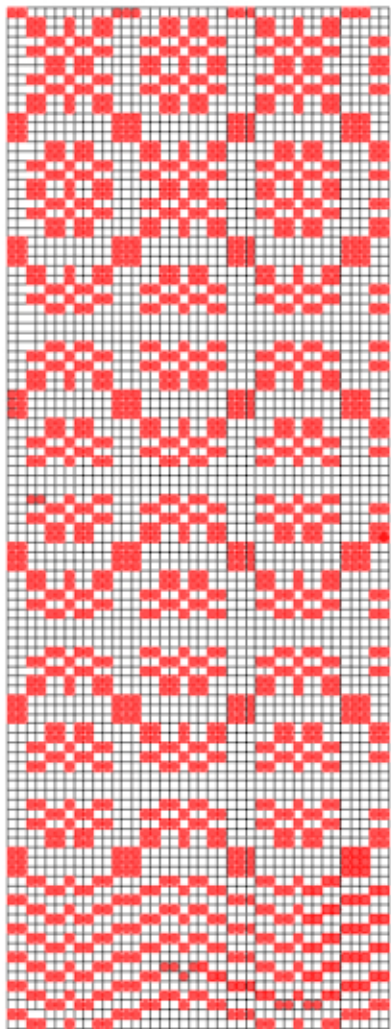


PIETRUCCIA BASSU

SOLO USO DECORATIVO



Pietruccia Bassu, ONLY DECORATIVE USE, may 8-24, 2019
curator Anna Oggiano

Pietruccia Bassu's works invite us to look beyond appearances at places, objects and events of the common life, to ask ourselves about the origin, the interactions and the correlations between them.

The occasion can arise from a domestic work - to wax the floor whose reiterated execution is transformed into a ritual dance - or from the observation of a man-made territory where the shadow lines of buildings on the pavement become a measure of the solar cycle.

The installation presented at the Spazio E_EMME explores the marriage ceremony through the sacred and superstitious ritual act: the throwing of the grain, the breaking of the plate, the favors with confetti.

All these elements, decontextualized in an exhibition hall, deprived of the human and emotional component of the greeting cries, enhance and lose all symbolic references.

Wheat returns to being a symbol of life, destined for sterility on the floor; the dishes appear shards to be brought together in new furnishings; the favors of white tulle are offered as fruits, suspended in three metal sheets.

The changing of all elements in DECORATIVE USE ONLY facilitates the operation of "reviewing" a popular tradition by stimulating questions about the origins and understanding of the use of words, colors and conventions in broader and more universal terms.

Pietruccia Bassu (Sassari 1969) lives and works in Sassari.

cover: Bomboniere, drawing, 2019

Spazio E_EMME
via Mameli 187
09126 Cagliari

www.spazioeemme.com
associazioneeemme@gmail.com